

Element Consulting Engineers hereby invites expressions of interest from **BEP EME*** and **QSE*** Consulting Engineering Companies to collaborate on projects across South Africa.



Disciplines required are:

- Civil Engineering
- Structural Engineering
- Transport Infrastructure Engineering
- Project Management Services



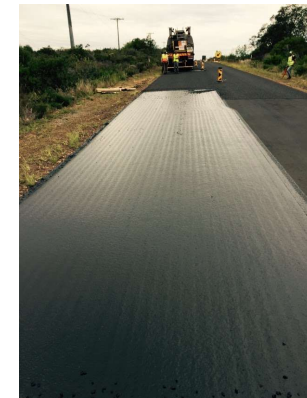
Requirements for participation:

- At least 51% owned by black people
- B-BBEE status of 'Level 1 and Level 2' contributor
- Registration in terms of the Company's Act, 2008 (Act No 71 of 2008) or Close Corporation Act, 1984 (Act no 69 of 1984)
- Registration on the National Treasury's Central Supplier Database

Required Documentation:

Interested companies are required to submit the following documentation:

- Company Profile (indicating services and branches)
- Certified and valid B-BBEE* Certificate (only Level 1 & 2) or Sworn Affidavit
- CSD Summary Report
- Certified copy of Professional Indemnity, Public Liability and 3rd Party Insurance
- Proof of COID Registration (Letter of Good Standing)
- Certified copy of Company Registration Documents
- Tax Clearance Certificate
- CV's of Key Personnel
- Declaration from auditor of company confirming that company is an EME or QSE and a copy of income statement to prove the turnover of the company for the previous financial year.



* References to EME, QSE and B-BBEE status are in terms of the amended Construction Sector Codes published in Notice 931 of 2017 in Government Gazette No 41287 on 1 December 2017.



Electronic submissions and queries to be sent to jvanschalkwyk@eceng.co.za