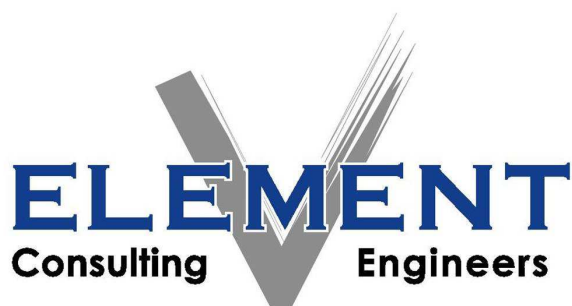




# CORPORATE PROFILE 2017

**A FIFTH DIMENSION TO ENGINEERING**



ISO 9001:2008 CERTIFIED

LEVEL 4 BBB-EE CONTRIBUTOR

100% PROCUREMENT RECOGNITION



# Element Consulting Engineers

Element Consulting Engineers is a well-established consulting engineering company with its head office in Durbanville, Western Cape, with 12 additional branches located nationwide. We have more than 20 years' experience in Southern Africa in the fields of Civil Engineering, Contract Administration & Supervision, Electrical Engineering, Mechanical Engineering, Roads & Transport Engineering, Structural Engineering and Water & Sanitation Engineering. We also offer expertise in the areas of Agricultural and Dam engineering, Project Management, Facilitation, Property and Tourism Development as well as Asset Survey & Management.

Element Consulting Engineers (Pty) Ltd's Mission is to become a leading supplier of quality engineering solutions, to the benefit of our Clients, the Community, our own Staff and Shareholders, with due consideration for the impact that our actions may have on the Environment. We believe that the success of any project lies in the team behind the work. Our staffing compliment combines experience, expertise and a passion for engineering introducing a fifth and uncompromising element into our services. It is this **spirit** which provides the driving forces behind our growing success.

## Company Overview

- 51.04% Historically Disadvantaged Individual (HDI) Shareholding
- 17,38% Black Women Equity Shares
- Staff Complement of more than 160 people
- 100% BBBEE Procurement Recognition Level; Status: Level 4 Contributor
- Registered with Consulting Engineers South Africa (CESA)
- Member of Green Building Council of South Africa
- Professional Indemnity Insurance Cover
- Quality Management System ISO 9001: 2008 Certified
- Engineering Bursary Scheme and Student Loans
- Black Employees Trust
- Joint-Ventures and Technical Exchange with Black Consulting Firms
- Corporate Social Responsibility
- Involved with Disadvantaged Communities

The firm strives to achieve excellence in all the services which it provides and to provide meticulous attention to detail whether the project is large or small.

It is an independent company with no obligations to, or ties with any commercial concern, which could influence its professional judgement, recommendations or decisions.

Our company offers equal opportunity in terms of qualifications for the appointment of staff with the most suitable qualification as selection criterion.

# Corporate Objectives

## Clients

To provide a professional service of the highest standard that meets the client's requirements with regard to costs, duration and management.

## Community

To undertake projects in cooperation with communities in order to meet the needs and aspirations, to provide employment opportunities which contribute towards the overall benefit of the country.

## Environment

To design and manage the implementation of projects in such a manner as to minimise any pollution, harm to the environment, or ecological disturbance; furthermore, to strictly adhere to the regulations of relevant authorities.

## Staff

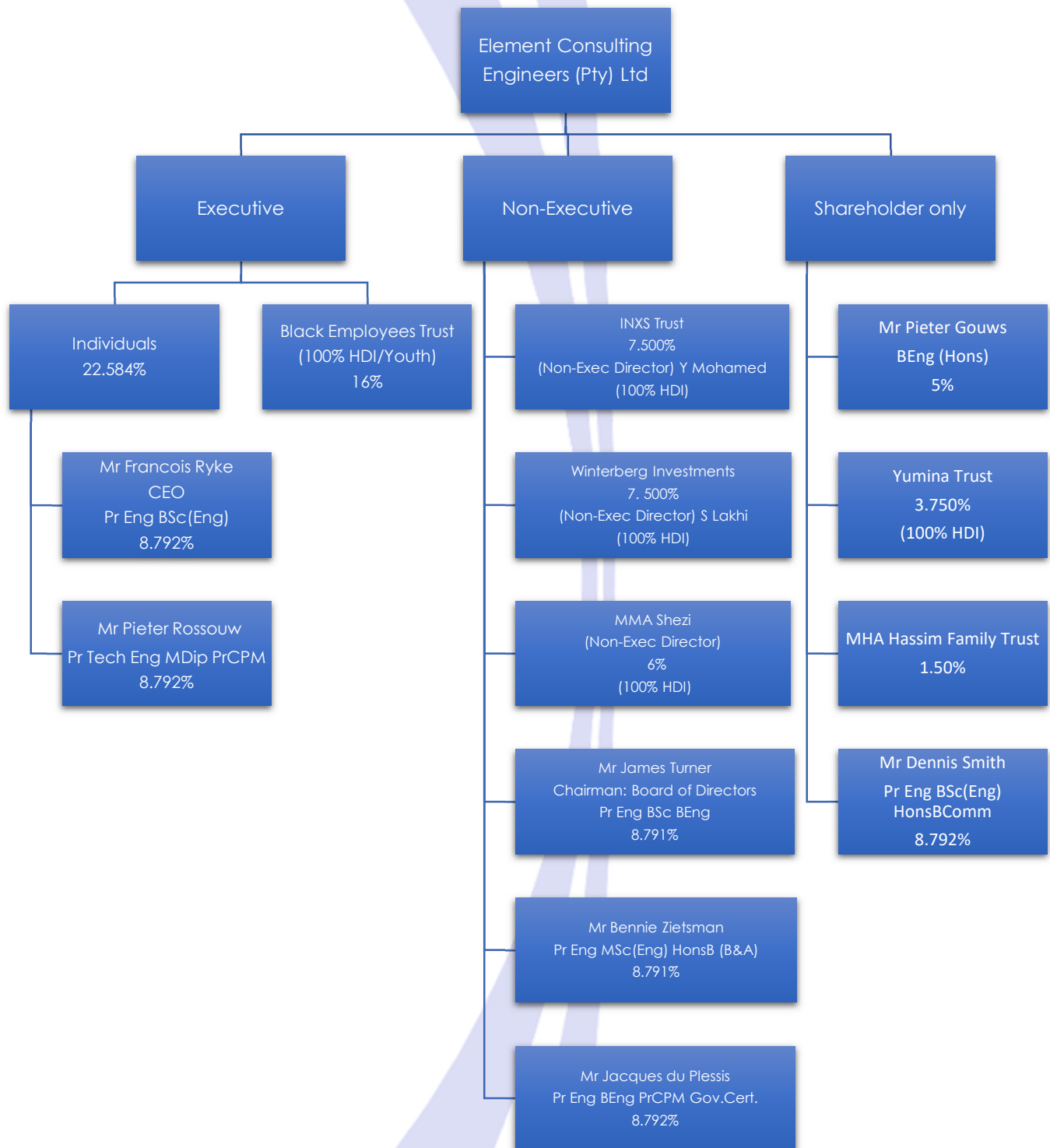
To maintain a well-qualified and efficient staff complement through the provision of good remuneration packages, pleasant working conditions, recognition, excellent resources, efficient leadership and a friendly working environment.

# Long Term Objective

To continually meet the objectives listed above and to maintain growth, but yet to remain small enough to still manage, at management level, each project in all its phases: report, design, documentation, project management and administration.

In essence therefore, we strive to ensure that at the completion of a project, all parties involved will be satisfied with the service and the end product, which was produced on time and within budget.

# Shareholding Structure



# Scope of Multi-Disciplinary Services Offered

- Project Management
- Contract Management
- Systems Engineering
- Quality Management
- Project Life Cycle Management
- Project Risk Management

## Project Management



- Bulk Water Supply
- Bulk Sewage Systems
- Stormwater Systems
- Pipelines
- Treatment Works
- Stormwater Floodlines
- Hydraulic Structures
- Master Plan Investigations
- Agriculture/Irrigation

## Water & Sanitation Engineering



- Project Investigations
- Project Planning:
  - Critical Path Analyses
  - Programming Of Activities
  - Organization and Co-ordination
- Community Liaison
- Financial Control:
  - Cost Estimates
  - Cost Projections And Reports
  - Subsidy Applications
  - Cost Control

## Facilitation & New Business Dev.



- LV, MV and HV Services
- Standby Power Systems
- Lighting
- Lightning and Surge Protection
- Access & Time Control Systems
- CCTV Surveillance Systems
- Fire Detection & Extinguishing Systems
- Communication Systems
- Internet Services Distribution
- Measurement & Distribution

## Electrical & Electronic Engineering



- Building Services:
  - HVAC
  - Fire Protection
  - Hot and Cold Water Reticulation
- Lift Specifications
- Project Engineering
- Plant Engineering:
  - Plant Layout
  - Product Conveyance
  - Equipment Design

## Mechanical Engineering



- Residential Developments
- Industrial Developments
- Bulk Water Supply
- Bulk Sewer Reticulation
- Sport Complexes and Facilities
- Labour Intensive Projects
- Low Cost Housing
- Roads/Bridges
- Reservoirs

## Civil Infrastructure Engineering



- Cost Estimates
- Bill Of Quantities
- Tender And Contract Documents
- Contract Award And Administration
- Construction Monitoring And Supervision
- Dispute Resolution, Claims Evaluations And Construction Adjudication
- As Built Records And Drawings

## Contract Management & Administration



- Civil Structures
- Buildings:
  - Commercial Developments
  - Industrial Developments
  - Residential Units
- Bridges
- Water Retaining Structures
- Treatment Plants
- Project Specifications

## Structural Engineering



- Material Investigations
- Visual Surveys
- Geometric Design
- Pavement Design
- Urban Transport
- Transport Networks
- Road Pavements

## Roads & Transport Engineering



- Dam Services
  - Embankment Dams
  - Concrete Dams
  - Tailings Dams
  - Pollution control dams
  - Off-channel storage dams
  - Retention&Attenuation dams
- Dam Safety Services
  - Dam Safety Evaluations
  - Dam Operations Manuals
  - Emergency Preparedness Plans & Dam break analysis

## Dam Engineering Services





# Geographical Representation



## Established Offices

Western Region	Eastern Region	Northern Region
Durbanville (Head Office) George Vredenburg Montagu* Mossel Bay* Uptington	East London Office Durban Bloemfontein*	Johannesburg Mbombela (Nelspruit) Polokwane Pochefstroom*

International Offices: Maputo, Mozambique, Windhoek, Namibia, Malawi\*

\*Representation Only

## International Project Locations

- Angola
- Brazil
- Ghana
- Malawi
- Mozambique
- Namibia
- Togo
- Zambia

# Project Portfolio

## Extract of Recent Projects



Bella Rosa Commercial and Residential Development, Bellville: **Civil & Electrical Engineering Services**



A Portion of the N10 between Prieska and Marydale: **Roads & Transport Engineering Services**



The Cliffs Residential Development, Bellville: **Electrical and Mechanical Engineering Services**



Kransbrug Siphon, Klawer: **Water & Sanitation, Civil and Structural Engineering Services**



Kelderhof Country Estate, Strand: **Civil, Electrical and Structural Engineering Services**



New Conference Centre to existing Protea Hotel, Stellenbosch: **Structural Engineering Services**



Karitas Special School, Vredenburg: **Civil, Electrical and Mechanical Engineering Services**



Novo Fruit Packaging Warehouse, Paarl: **Civil, Electrical, Mechanical and Structural Services**



Stilbaai Sewer Pump Station, Stilbaai: **Water & Sanitation, Civil Structural and Mechanical Engineering Services**



Construction of Border Dam: Gravel Embankment Dam: **Dam Engineering Services**



The Construction of Modderlei Dams for Department of Land Affairs: **Dam Engineering Services**



Khi Solar One 50 MW Tower with energy storage system



## Extract of Recent Projects Continued



Zonkwasdrift River Crossing  
(Phase 2): **Water & Sanitation  
Engineering Services**



Kronendal Retirement Village,  
Hout Bay: **Electrical and  
Mechanical Engineering Services**



Somerbosch Stud Farm,  
Stellenbosch: **Civil, Electrical,  
Mechanical and Structural  
Engineering Services**



Replacement of Generators for  
Transformers at Steenbras Power  
Station: **Electrical Engineering  
Services**



The Construction of De Villiers  
Road between Verdi Street and  
Brackenfell Boulevard: **Roads &  
Transport Engineering Services**



Construction of 8MI Bulk Water  
Reservoir, Vredenburg: **Water &  
Sanitation, Civil and Structural  
Engineering Services**



Construction of Bottelary Road  
Bridge over R300, Kuils River:  
**Structural Engineering Services**



Construction of Reservoir,  
Montagu: **Structural Engineering  
Services**



20MVA Substation, Substation:  
**Electrical and Civil Engineering  
Services**



Revitalization of Paarl Hospital,  
Phase 2, Paarl: **Structural  
Engineering Services**



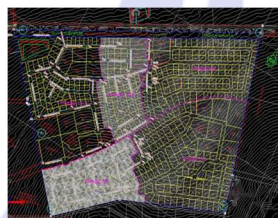
Langebaan Waste Water  
Treatment Works, Langebaan:  
**Water & Sanitation Engineering  
Services**



Cape Diamond Hotel, Cape  
Town: **Electrical and Electronic  
Engineering Services**



New Seshego Mall  
Development.  
**Water, Sewer, Roads and  
Stormwater township  
development**



Aloes Township Development  
**Water, Sewer, Roads and  
Stormwater township services**



Compilation of Operation and  
Maintenance Manuals and  
Emergency Preparedness Plans  
for Category II and III DWS **Dams**  
throughout South Africa



## Extract of Recent Projects Continued



Redevelopment Strategy for Calitzdorp Spa, Calitzdorp:  
**Tourism Engineering Services**



Special Maintenance Of National Route 2 Between George And Knysna: **Roads**



Repairs to Flood Damage, Swellendam: **Water & Sanitation and Civil Engineering Services**



Foreshore Switching Substation, Cape Town:  
**Electrical, Mechanical and Structural Engineering Services**



Besaansklop Reservoir Phase 2, Vredenburg: **Water & Sanitation Engineering Services**



Brackenfell Boulevard Bridge, Brackenfell: **Structural Engineering Services**



Langebaan Country Estate Development, Langebaan: **Civil, Structural and Electrical Engineering Services**



Nieuwoudtville Rooibos Tea Processing Plant: **Civil, Electrical, Mechanical and Structural Engineering Services**



Gonubie Palms **Residential Development**, East London



Cavalli Stud Farm New Stables and Arena, Stellenbosch: **Structural Eng Serv.**



Plattekloof Bridge, Parow: **Structural Engineering Services**



Undercover Training Area, Markotter Field Stellenbosch: **Structural Engineering Services**

## Head Office

### DURBANVILLE

Oxford Gate Block C  
54 Oxford Street, Durbanville 7550  
PO Box 1142, Durbanville 7551  
Tel: +27 21 975 1718 Fax: 086 668 1482

## Contact Us

[www.eceng.co.za](http://www.eceng.co.za)

## SOUTH AFRICA

### Western Cape

#### VREDENBURG

19B Main Street Vredenburg 7380;  
PO Box 922 Vredenburg 7380

Tel: +27 22 713 5204 Fax: +27 22 713 4251

#### MONTAGU\*

4E Church Street Montagu 6720;  
PO Box 623 Montagu 6720

Tel: +27 23 614 2248 Fax: +27 23 614 2248

### Eastern Cape

#### EAST LONDON

52 Stewart Drive Baysville  
East London 5205;  
PO Box 19429 Tecoma 5241

Tel: 27 43 726 0074 Fax: +27 43 726 0600

### Southern Cape

#### GEORGE

82 Victoria Street George 6530;  
PO Box 9962 George 6530

Tel: +27 44 884 1138 Fax: +27 44 884 1185

#### MOSSEL BAY\*

37 Van Rensburg Street Mossel Bay 6506;  
PO Box 1162 Hartenbos 6520

Tel: +27 44 620 3817 Fax: +27 44 620 3817

### Northern Cape

#### UPINGTON

15 Wildebees Street Rand Upington 8800;  
PO Box 1201 Upington 8800

Tel: 27 54 331 1961 Fax: +27 54 331 1962

### Gauteng

#### Johannesburg

Ground Floor, Building 3, Oak Place,  
145 Western Service Road,  
Woodmead, Johannesburg, 2191

Tel: 011 656 3938 Fax: 086 766 8716

### Mpumalanga

#### MBOMBELA / NELSPRUIT

Nelspruit Office, de Blok Office Park,  
Office O2, c/o Ferreira and Wilhelm Street,  
Nelspruit, 1200

Tel: +27 013 590 9060 Fax: +27 86 212 8446

### KwaZulu-Natal

#### Westville

10 Killikrankie Road Westville Durban 3630;  
PO Box 1071 Westville Durban 3629

Tel: +27 31 266 9699 Fax: +27 31 267 0408

### Limpopo

#### POLOKWANE

17E Schoeman Street, Polokwane, 0699  
PO Box 1177, Bendor Park,  
Polokwane, 0713

T: +27 15 291 0951 | F: +27 87 941 9851

### Free State

#### BLOEMFONTEIN

11 Rindl Street, Universitas, Bloemfontein,  
9301  
PO Box 11309, Universitas,  
Bloemfontein, 9301

Tel: +27 51 522 4655 Fax: +27 86 659 9701

### North West

#### POTCHEFSTROOM

12 Piet Cronje Street, Baillie Park,  
Potchefstroom, 2526  
Posnet Unit 419 / Private Bag X1288  
Potchefstroom, 2526

Tel: +27 18 290 5519 Fax: +27 86 659 9710

## INTERNATIONAL

#### NAMIBIA

6 Otto Nitzsche Street Klein Windhoek  
PO Box 11598 Klein Windhoek Namibia

Tel: +26 4 61 309 416 Fax: +26 4 61 309 235

#### MOZAMBIQUE

Av. 25 de Setembro, 2400, R/C,  
Maputo, Mozambique  
Email: [info@ecengmoz.co.mz](mailto:info@ecengmoz.co.mz)

Tel: +25 8 84 306 1206

#### MALAWI\*

PO Box 1490 Blantyre Malawi